

XWeB User's Guide

Source code

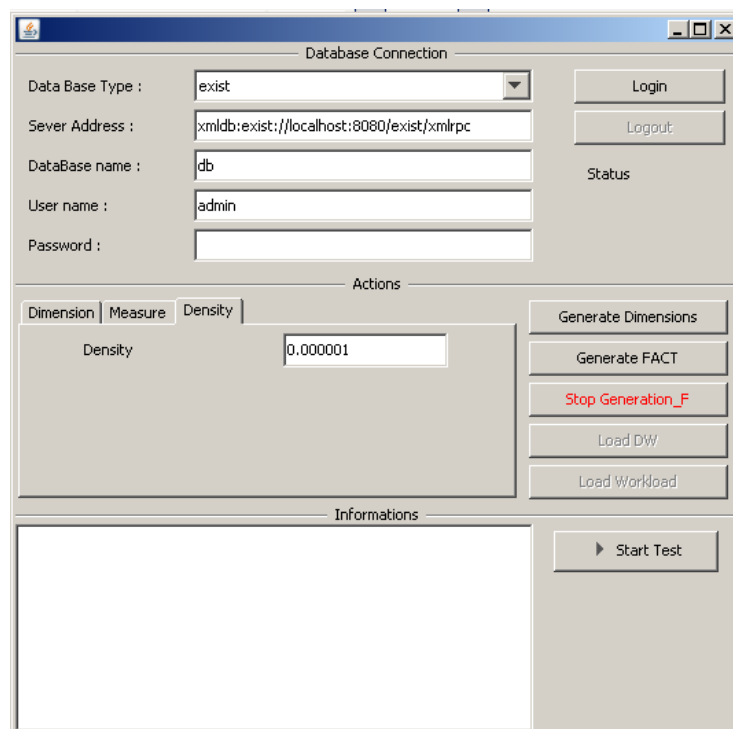
This version of XWeB is delivered as an Eclipse Java project. Source files are organized into directories:

- *src/* contains the Java code of the application organized in packages;
- *lib/* contains the *.jar files needed for database connections and query execution;
- *data/* contains TPC-H/dbgen source data files;
- *dimensions/* is a temporary directory used for dimension document generation and loading;
- *workload/* contains the XQuery workload;
- *doc/* contains the Java-generated documentation.

GUI

To run XWeB, execute the project main class *Lanche_applicationⁱ*. The execution of this class provides a Swing interface subdivided into three panels:

- *Database Connection* helps choose and connect/disconnect to/from a specific database management system (DBMS). A connection status label is related to this component;
- *Actions* allows setting warehouse generation parameters and generating dimension and fact XML documents. It also allows loading XML documents and an XQuery workload;
- *Information* helps execute workload queries. It outputs loading and execution times.



Generating an XML warehouse

To generate the XML dimension files, press the *Genarate Dimensions* button.

To generate the fact XML document:

1. set the density value;
2. press the *Generate FACT* button;
3. fact generation can be stopped by using the *Stop Genration_F* button.

Loading an XML warehouse

To load the warehouse's XML documents:

1. select a DBMS in the *Database Connection* panel;
2. set the database connection parameters (host, database name, login and password);
3. press the *Load DW* button;
4. information about loading success and time are displayed in the *Information* panel.

Executing a workload

To execute an XQuery workload:

1. select a database system using the *Database Connection* panel;
2. set the database connection parameters (host, database name, login and password);
3. press the *Start Test* button;
4. information about workload execution success and time are displayed in the *Information* panel.

ⁱ Yes, English *will* be corrected in the next version!